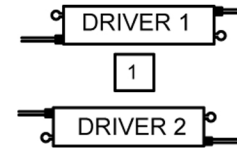
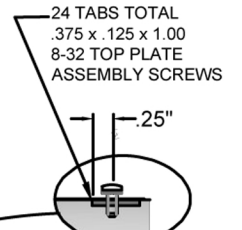
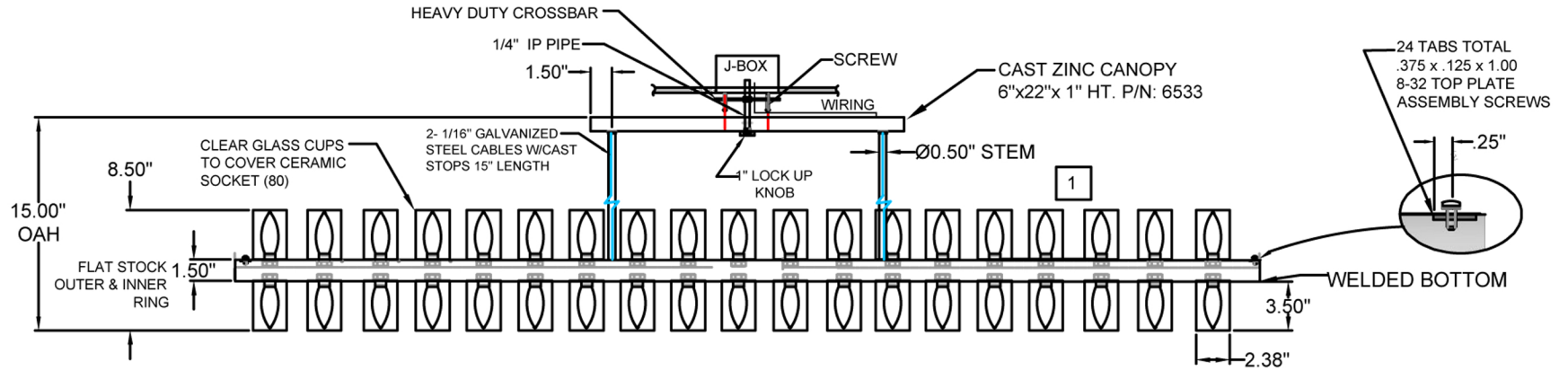


**NOTES:**

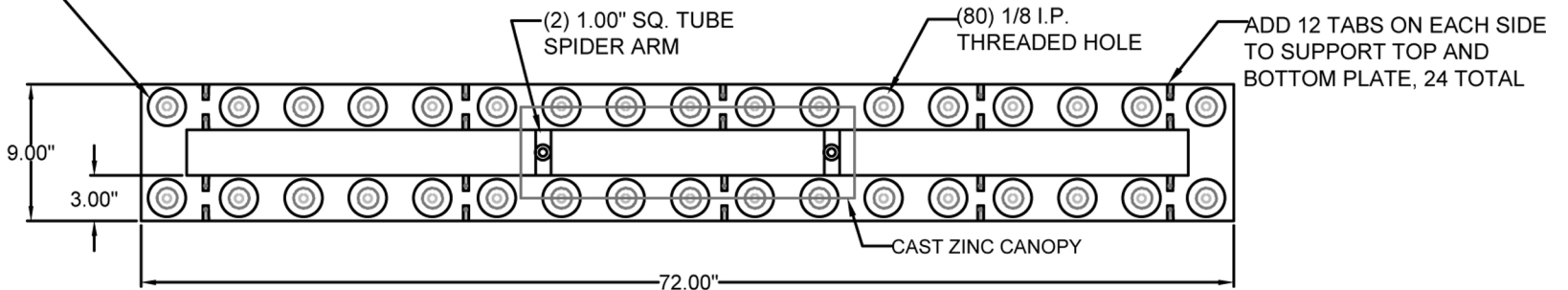
- 1 DIODE LED DRIVER, 100W 120-277VAC, 12VDC OUTPUT, IS REQUIRED TO MEET LIGHT BULB POWER REQUIREMENTS. CUSTOMER TO DETERMINE DRIVER'S REMOTE LOCATION.
- 2 CHANDELIER IS TO BE PRE-WIRED AND FULLY ASSEMBLED, READY TO INSTALL.



J-BOX to be SUPPORTED by a BEAM ANCHORING METHOD to be DETERMINED by INSTALLER to SUPPORT the LOAD.



- 1 (80) SATCO G4 HALOGEN BULBS, 5W 2700K EA. G4 MINI-BIN SOCKET 250V MAX. PROVIDED AND PRE-WIRED BY FABRICATOR (SUPPLIED BY OTHERS)



**VIEW "A"-"A"**