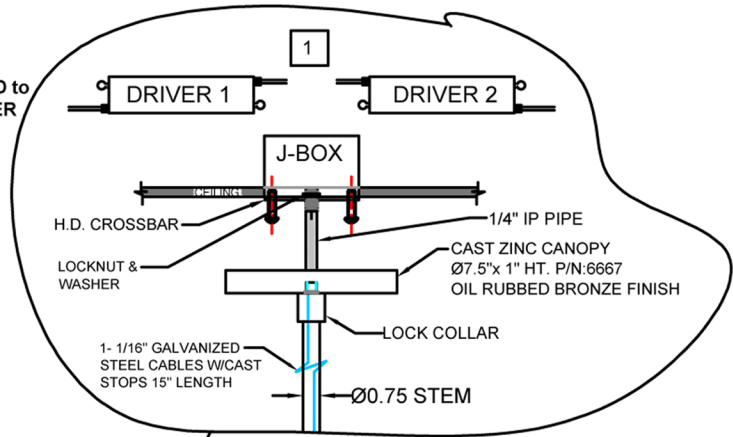


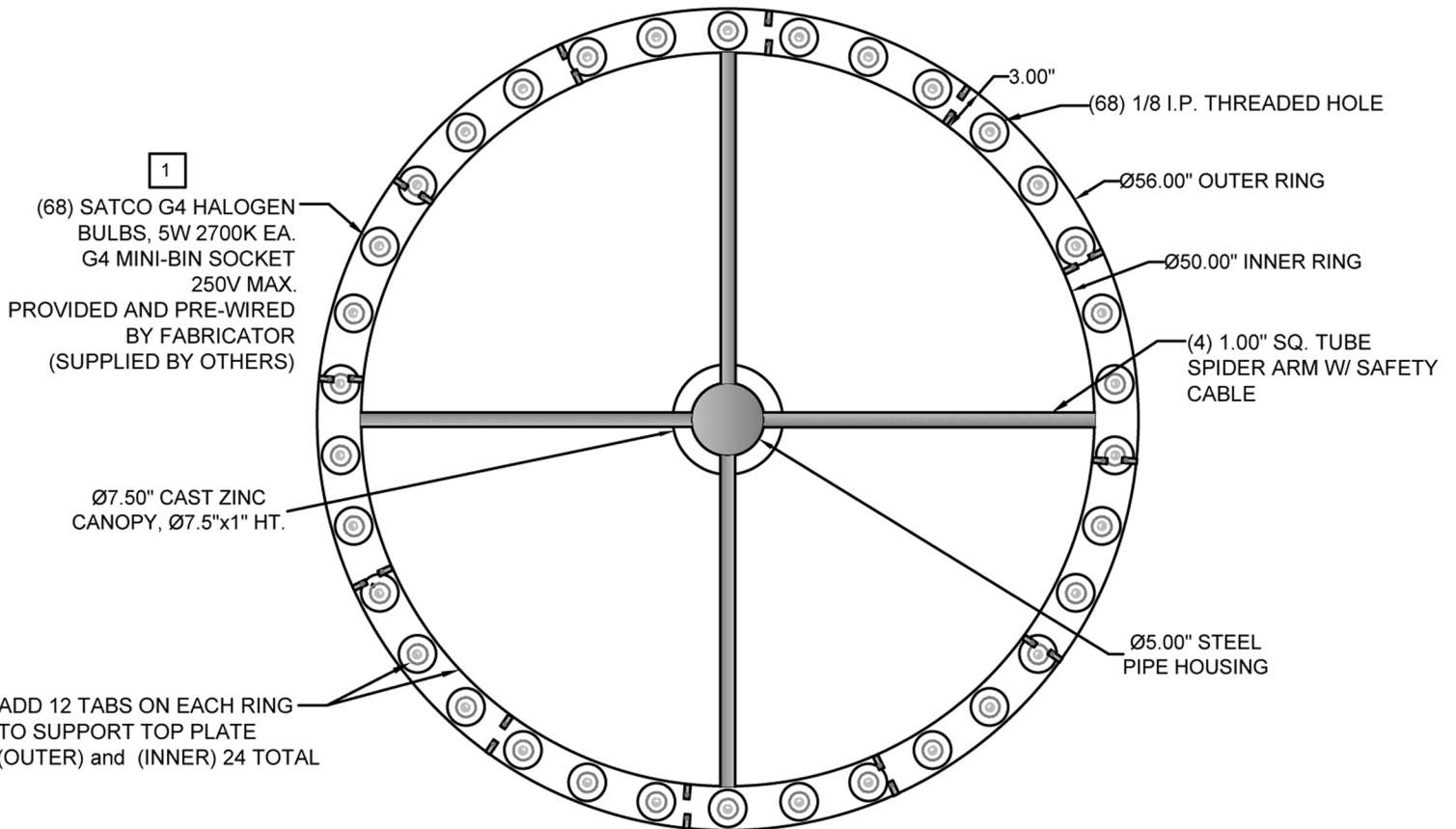
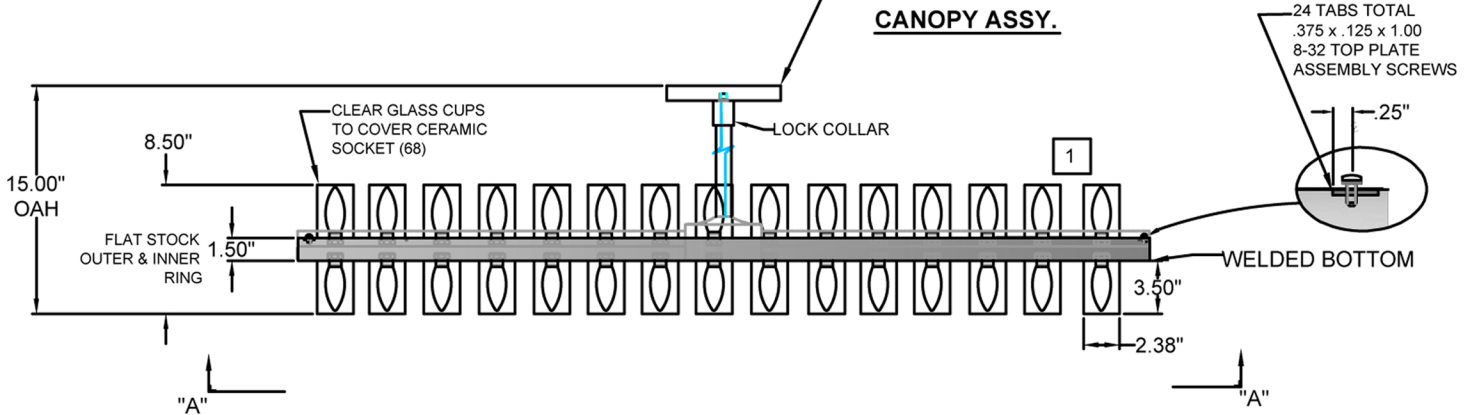
J-BOX to be SUPPORTED by a BEAM ANCHORING METHOD to be DETERMINED by INSTALLER to SUPPORT the LOAD.

NOTES:

- 1 DIODE LED DRIVER, 100W 120-277VAC, 12VDC OUTPUT, IS REQUIRED TO MEET LIGHT BULB POWER REQUIREMENTS. CUSTOMER TO DETERMINE DRIVER'S REMOTE LOCATION.
- 2 CHANDELIER IS TO BE PRE-WIRED AND FULLY ASSEMBLED, READY TO INSTALL.



CANOPY ASSY.



VIEW "A"-"A"